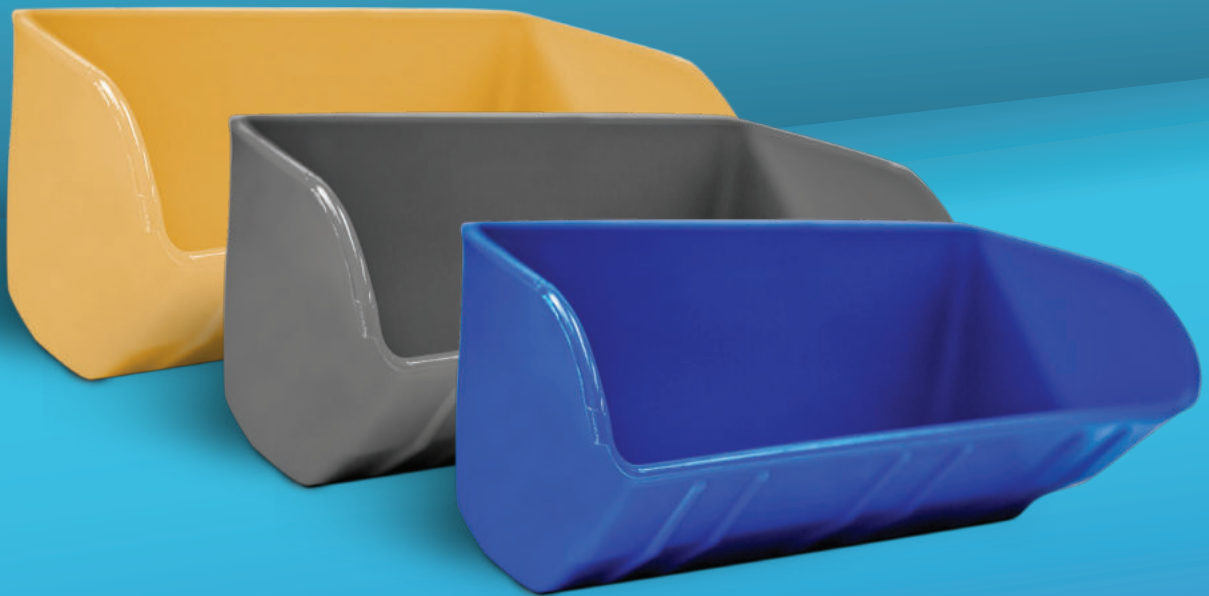


CONVEYING and HANDLING COMPONENTS



CONTENTS



Plastic Buckets

FORCE
SUPERIOR
EXTREME
STARCO

Steel Buckets

Ancillary Equipments

FLIGHTS
BOLTS



FORCE

SUPERIOR



EXTREME

STARCO



%100 DOMESTIC **%100 YEMMAK**

Specializing in elevator buckets for grain and agricultural products to be used in factories and storage facilities, Yemmak delivers maximum performance and efficiency with 100 percent domestically-produced elevator buckets.

Yemmak always strives to offer practical, useful and value-added products through its advanced technology, R&D activities and business vision. It continues to design and produce towards the sustainable growth of the Turkish food and industrial sector.

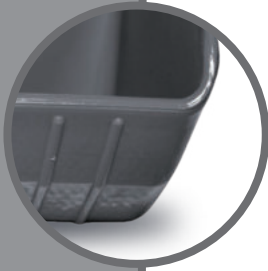
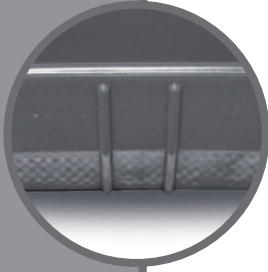
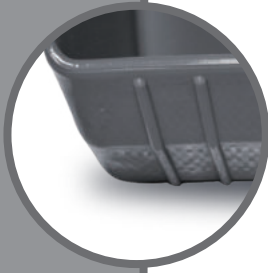
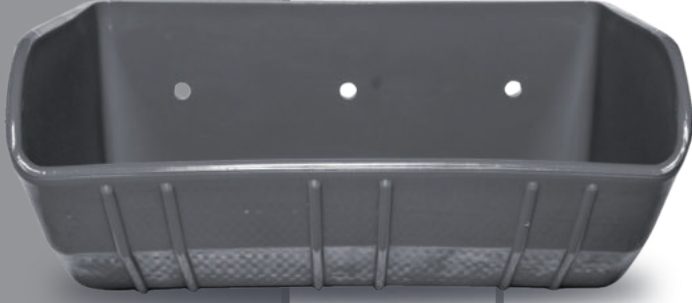


FORCE

ADDS PRESTIGE!

Force buckets are produced from polypropylene that has an intermediate level of crystallinity between that of low-density polyethylene (LDPE) and high-density polyethylene (HDPE). Therefore, they are remarkably resistant to fatigue. The Young's modulus (modulus of elasticity) is also intermediate.





RESISTANCE PROPERTIES

- 1 IMPACT RESISTANT
- 2 WEAR RESISTANT
- 3 ELASTIC STRUCTURE AGAINST STRESS
- 4 ANTI-STATIC
- 5 LOWER COSTS
- 6 A LOW COEFFICIENT OF FRICTION

USAGE AREAS

-  LIGHT INDUSTRY PRODUCTS
-  GRAIN AND AGRICULTURAL PRODUCTS

BUCKETS PLASTIC BUCKETS

SUPERIOR

NO INTERRUPTION!

Superior is made of ultra high-density polyethylene to deliver an excellent performance in every task with its flexible structure. Superior lends sustainability and quality to your business thanks to its robust and durable material.





RESISTANCE PROPERTIES

- 1 WEAR RESISTANT
- 2 IMPACT RESISTANT
- 3 FOOD-GRADE UNLESS PAINTED
- 4 CONTAINS UV ADDITIVES
- 5 CHEMICALLY RESISTANT
- 6 TOUGH
- 7 ELASTIC STRUCTURE AGAINST STRESS
- 8 ANTI-STATIC

USAGE AREAS

-  LIGHT INDUSTRY PRODUCTS
-  GRAIN AND AGRICULTURAL PRODUCTS

BUCKETS PLASTIC BUCKETS

EXTREME

PROVIDES ADDITIONAL VALUE!

● Extreme is produced from high-performance engineering plastics, and therefore, has high impact resistance and a high coefficient of friction.

It puts in full performance by eliminating frictional melting, wear and product loss.





RESISTANCE PROPERTIES

- 1 RIGID AND RESISTANT TO STRONG IMPACTS
- 2 OFFERS FRICTIONAL AND WEAR RESISTANCE
- 3 CHEMICALLY RESISTANT
- 4 TOUGH
- 5 TENSILE STRENGTH
- 6 WEATHERPROOF

USAGE AREAS

-  HEAVY INDUSTRY PRODUCTS
-  GRAIN AND AGRICULTURAL PRODUCTS

BUCKETS PLASTIC BUCKETS

STARCO

OFFERS HIGH VOLUME!

Starco buckets made of PP, HDPE or nylon enjoy a higher capacity thanks to their widemouthed structure. They prevent air circulation inside the elevator with their front profile.



BUCKETS

PLASTIC BUCKETS



RESISTANCE PROPERTIES

- 1 WEAR RESISTANT TO STRONG IMPACTS
- 2 SMOOTH SURFACE
- 3 OFFERS LONG-TERM USE WITH LIGHTER PRODUCTS
- 4 LOWER RATE OF BREAKAGE FOR PELLET PRODUCTS
- 5 ANTI-STATIC

USAGE AREAS

-  LIGHT AND HEAVY INDUSTRY PRODUCTS
-  PELLET AND AGRICULTURAL PRODUCTS






BUCKETS

STEEL BUCKETS

RESISTANCE PROPERTIES

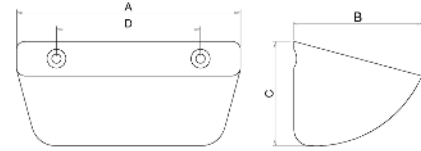
- 1 PRESSED, WELDLESS, SEAMLESS STEEL
- 2 STACKABLE DESIGN FOR EFFICIENT SHIPPING
- 3 HIGH-CAPACITY
- 4 LONG-LASTING
- 5 WEAR AND HEAT RESISTANT
- 6 PERFECT FILLING AND DISCHARGE

USAGE AREAS

-  LIGHT AND HEAVY INDUSTRY PRODUCTS
-  GRAIN
-  PELLET AND AGRICULTURAL PRODUCTS

STEEL BUCKETS

BUCKET MODEL	BUCKET SIZES (mm)				BUCKET VOLUME (lt)
	A	B	C	D	
M120-100	120	100	80	50	0,45
M160-130	160	130	95	70	0,84
M180-145	180	145	115	80	1,15
M200-155	205	155	115	80	1,42
M220-170	220	170	115	100	2,13
M235-170	235	170	115	125	1,82
M250-170	255	170	125	75	2,32
M280-170	280	170	130	90	2,43

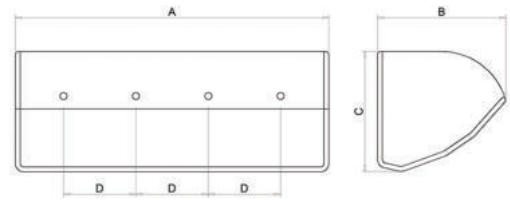


* It is delivered ready-to-use after the requested number of holes are made.

PLASTIC BUCKETS

Standart Buckets

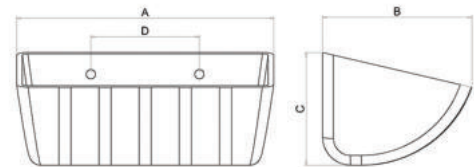
BUCKET MODEL	BUCKET SIZES (mm)				BUCKET VOLUME (lt)
	A	B	C	D	
K140-120	133	114	103	80	0,58
K180-140	185	145	125	80	1,2
K200-160	200	180	135	80	2
K220-160	220	168	154	125	2,1
K230-160	230	180	135	125	2,2
K260-160	260	180	135	75	2,45
K280-160	280	170	145	90	2,8
K300-160	310	185	145	90	3
K330-160	330	168	154	90	3,3
K350-180	360	197	179	90	4,8
K380-180	380	210	155	90	5,4
K400-180	417	197	179	90	5,7
K450-180	450	205	160	82	6,5



* It is delivered ready-to-use after the requested number of holes are made.

Starco Buckets

BUCKET MODEL	BUCKET SIZES (mm)				BUCKET VOLUME (lt)
	A	B	C	D	
S140-120	140	120	90	62	0,6
S160-140	160	152	113	78	1,2
S180-140	180	150	112	77	1,3
S200-150	200	150	112	75	1,35
S220-160	220	160	115	79	1,9
S240-165	240	175	135	93	2,5
S260-180	260	185	140	97	3
S280-180	280	185	140	97	3,3
S300-180	300	185	140	97	3,6
S320-180	320	185	140	97	4



* It is delivered ready-to-use after the requested number of holes are made.

FLIGHT CHAIN CONVEYOR FLIGHT

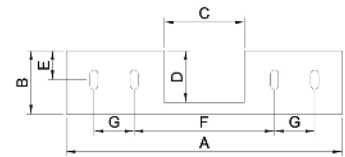
They are made of special engineering plastics with high impact resistance and an increased coefficient of friction.

RESISTANCE PROPERTIES

- 1 EASILY MOUNTABLE
- 2 RAPIDLY AND EASILY REPLACEABLE
- 3 MINIMUM MAINTENANCE, STORAGE AND TRANSPORTATION COSTS
- 4 REDUCE CONVEYOR NOISE
- 5 REMOVE THE NEED FOR GROUND COATING IN THE CONVEYOR

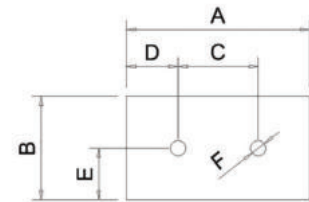
Steel-Reinforced Chain Flight - M Type

FLIGHT MODEL	A	B	C	D	E	F	G
Flight 240 M	240	55	70	45	25	122	35
Flight 310 M	310	70	90	60	30	170	70
Flight 390 M	390	70	90	60	30	145	70
Flight 490 M	490	70	90	60	30	145	120



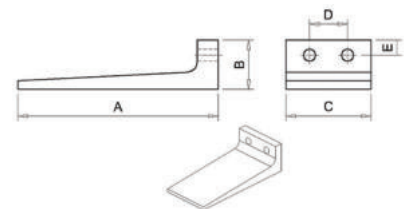
Steel-Reinforced Chain Flight - S Type

FLIGHT MODEL	A	B	C	D	E	F
Flight 80 S	80	45	35	23	23	7
Flight 110 S	110	60	70	20	30	9
Flight 150 S	150	60	70	50	30	9
Flight 190 S	190	60	120	50	30	9



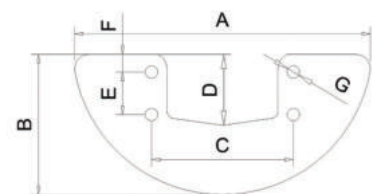
Chain Flight - L Type

FLIGHT MODEL	A	B	C	D	E
Flight 106 L	106	26	45	20	8
Flight 136 L	136	37	58	30	12
Flight 176 L	176	37	58	30	12
Flight 225 L	225	37	58	30	12



Chain Flight - D Type

FLIGHT MODEL	A	B	C	D	E	F	G
Flight 210 D	210	100	100	50	30	12	9
Flight 300 D	300	120	115	50	30	30	9
Flight 380 D	380	145	106	80	40	30	9





BOLT PROPERTIES AND BENEFITS

Thanks to their special design, they help buckets attach to elevators in the strongest manner possible.

- Steel flat-head bolts are manufactured as per DIN 15237 standards.
- They are long-lasting and durable.
- They have white or yellow coatings.

Options

- They can be supplied with fiber nuts, plain or spring washers.
- Available in different bolt sizes.

ELEVATOR BAND FEATURES

- Wear resistant to strong impacts
- Smooth surface
- Low breakage rate for products

Material

Color

Bucket Range

Rubber, Nitril, Anti-Static, Cord Fabric

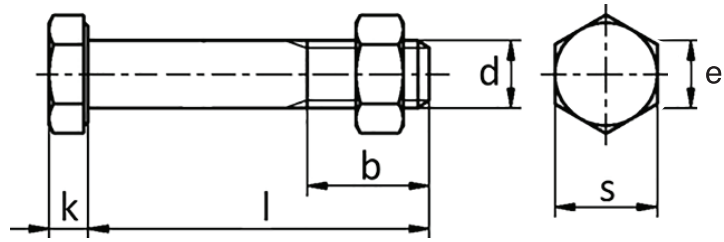
Black/other colors

Drilling holes in requested sizes

BOLTS

ELEVATOR BUCKET BOLTS

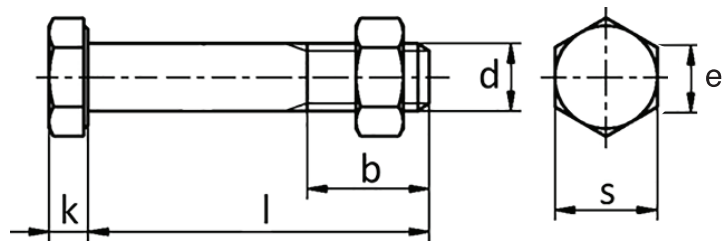




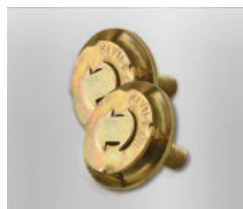
Bolts comply to DIN 15237



Steel Bolt	L	E
M8	M8x30	30
M8	M8x40	30
M8	M8x50	30



Bolts comply to DIN 15237



Flush Head Bolt	L	E
M8	M8x30	30
M8	M8x40	30
M8	M8x50	30

Washers



Conical Spring Washer	K	Diameter
M8	1,5	28



Plain Washer	K	Diameter
M8	1,5	28

Nuts DIN 936



Fiber Nuts	K	E
M8	8	14,44



Nuts	K	E
M8	8	14,44

600 Evler Mah. Balıkesir Asf. Sol Taraf No:96, 10201 Bandırma / Balıkesir

T: +90 266 733 83 63 (3 Line) • F: +90 266 733 83 66

   | yemmak.com

 **YEMMAK**
Re-form by Technology